

deeper

DEEPER SMART SONAR CHIRP 2

SMART FISHING SOLUTION



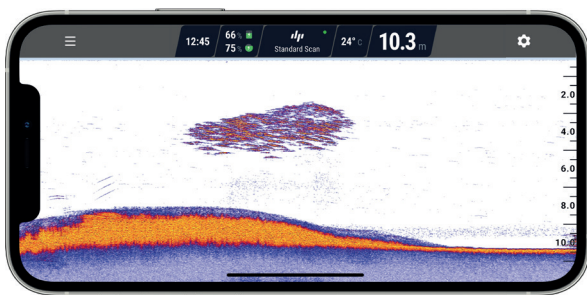
SHORE FISHING BOAT / KAYAK FISHING ICE FISHING

ANGLERS WANTED MORE POWER, SO WE TOOK ON THE CHALLENGE. WE WENT FOR THE RISKIEST OPTION ON THE LINE. AND BY PAIRING HARDWARE WITH SOFTWARE, WE HAVE GONE ABOVE AND BEYOND. OR IN THIS CASE... DEEP BELOW, SO EVERY ANGLER COULD UNLOCK THE SECRETS OF THE WATERS. MEET THE DEEPER CHIRP 2. SMART FISHING SOLUTION AND THE MOST POWERFUL CASTABLE SONAR WE EVER MADE. FOR NOW.

Originally developed by the US Navy, this technology has been at the disposal of boat fishermen for years, and we made it available to ANY ANGLER to take it ANYWHERE, to go fishing ANYTIME. And now it's even more powerful with amazing features and access to bathymetric maps. Plan your fishing trips easier with data accessible on any device. Fish for hours without worrying about charging your sonar.

WHY CHIRP 2?

Fish like never before with the crisp clarity and extreme accuracy of CHIRP 2, paired with the Fish Deeper™ app. Plan, log and analyze your fishing trips, and create your own bathymetric maps. Access your data on any device.



UNBELIEVABLE TARGET SEPARATION

With a target separation of 0.4", you'll be able to easily pinpoint target species even when they are amongst a school of bait fish. Track even the tiniest lure when vertical jigging.

EXTREME DEPTHS PRECISION

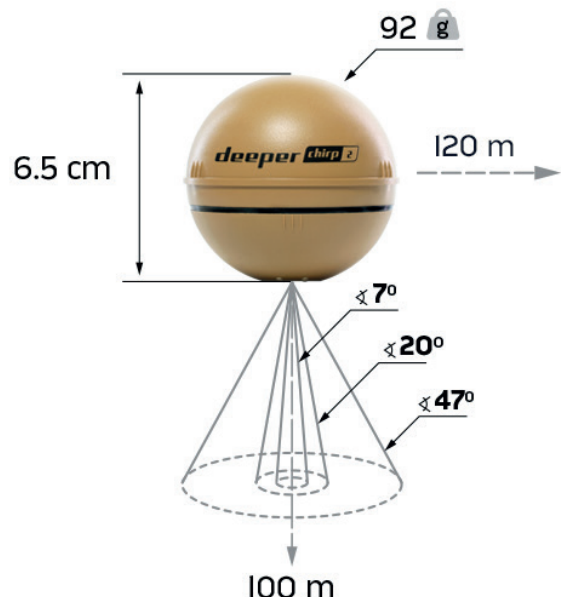
With CHIRP 2, surface clutter and noise are minimal, so you can expect precise sonar readings in very shallow water and locate fish as close as 6" from the water's surface. To the other extreme, you will be able to distinguish bottom huggers in water as deep as 330ft.

3 BEAM FREQUENCIES FOR VERSATILITY

Discover fish holding spots faster with the wide angle beams or locate your target species through extra thick ice with a 7° narrow angle beam.

WHY DEEPER?

We are pioneers in castable, smart sonar technology. With our first smart sonar released in 2013, we have only moved onward and upward, constantly challenging ourselves to innovate more and do everything better. Our sonars are superior quality, designed and made in Europe, and with 24/7 customer care. Our anglers always come first.





WHAT IS CHIRP?

A traditional sonar sends out a single frequency pulse at a time. A CHIRP (Compressed High Intensity Radiated Pulse) sonar sends out a continuous flow of frequencies, ranging from low to high and because of this, the sonar readings are much clearer and have a higher resolution compared to traditional sonars.

SMART FISHING SOLUTION. Powerful castable and most advanced CHIRP sonar with three beam frequencies, crisp clarity and extreme accuracy. Ideal for quickly locating target species holding spots, pinpointing predator fish and fishing in extreme depths. Paired with innovative software, Fish Deeper™ app and web platform, to easily plan fishing trips. Designed for the ultimate fishing experience.

IMPRESSIVE CASTING RANGE AND PORTABILITY. Casts out to 120 m / 394 ft with solid connectivity. Wireless, small and lightweight. Fits in a tackle box and even your pocket. Compatible with iOS and Android devices. Generates its own Wi-Fi signal to connect to your smart device. No internet or cellular data needed.

TOTALLY VERSATILE. Various fishing modes for specific types of fishing. Use for boat/kayak, shore/bank and even ice fishing with its traditional flasher view. Fish in the summer or the winter, during the day or night. One sonar fits all.

BATHYMETRIC MAP CREATION. Create your own maps from your boat or kayak and access all your scans, maps, points of interests, photos and notes on the Fish Deeper™ app and web platform.

USER-FRIENDLY APP. See fish, vegetation, bottom structure,

contour, hardness and consistency. Fish Deeper™ app includes water temperature and depth, various color palettes for viewing, optional icons, sonar sensitivity adjustments and traditional ice flasher.

EXTENDED 5 YEARS MANUFACTURER'S WARRANTY. Now you can have a peace of mind and simply enjoy great fishing experience knowing that your Deeper CHIRP 2 will last a long time.

ONLY QUALITY. Made from highly durable ABS plastic with titanium inserts and a silicone gasket, it's not only water proof, but weather proof, handling temperatures as low as -4°F.

WHAT'S NEW?

Different look, hiding much more power inside than ever before, and offering the opportunity to explore global depth maps.

NEW Wi-Fi MODULE. This module ensures a better and more stable connection in bad weather conditions up to 120 m / 394 ft.

FAST CHARGING POWERFUL BATTERY. Working time up to 15 hours. Charges to 100% in just 2 hours.

CHIRP+ 2 model is powered by an advanced **ARM CORTEX M7 PROCESSOR** which ensures **BETTER GPS** performance, provides crisp and clear visuals even of the smallest objects, and keeps the **ENERGY CONSUMPTION** very low.

NIGHT FISHING COVER IN THE BOX. Easily spot your sonar in the dark and other low visibility conditions.

DESERT SAND COLOUR. Same shape and size with a fresh new look.

FISH DEEPER™ PREMIUM

Explore over 50 000 lakes with Fish Deeper™ Premium. Get a FREE 3-month subscription with your CHIRP 2.

maps.fishdeeper.com



PRODUCT TECH SPECS:

Material	ABS enclosure, Titanium inserts
Sonar Type	3 Frequency CHIRP
Frequency (Beam cone)	Narrow CHIRP 675 kHz (cone angle 7°) Medium CHIRP 240 kHz (cone angle 20°) Wide CHIRP 100 kHz (cone angle 47°)
Target separation	1 cm / 0.4 in. Narrow Chirp 2.4 cm / 0.94 in. Medium Chirp 2.4 cm / 0.94 in. Wide Chirp
Min - Max depth	0.15 m / 6 in. Narrow CHIRP 0.6 m / 24 in. Medium CHIRP 0.8 m / 31.4 in. Wide CHIRP 100 meters / 330 ft.
Scanning rate	Up to 15 / second
Sonar modes	Standard, Boat, Ice fishing, Onshore GPS
Temperature sensor	Water surface temperature sensor in Celsius / Fahrenheit
Operating temperature	-20°C to 40°C / -4F to 104F
GNSS (Global positioning systems supported)	GPS, GLONASS, Galileo, BeiDou, QZSS
Operating time	GPS ON up to 9 hours GPS OFF up to 15 hours
Charging technology	Fast charge 80% in 60 min. 100% in 110 min.
Internal battery	Li-Ion, 3.8V Rechargeable, 1300 mAh
Outlet adapter (not included)	Input 110V/220V. Output Micro USB, 5V 2A
Connectivity	Wi-Fi
Connectivity range	Stable connection up to 120 m / 394 ft.
Colour	Desert sand
Package content	CHIRP+ 2 Sonar USB wire Neoprene pouch Attachment bolts x2 Quick Guide Safety Regulations Night Fishing Cover

PRODUCT LOGISTIC SPECS:

Model	DP4H10S10
EAN	4779032950671
Product size	65 mm / 2.55 in diameter
Product weight	92 g / 3.2 oz
Retail packaging size	15x15x7,6 cm / 6x6x3 in
Retail packaging weight	305 gr. / 10,7 oz
QTY per multipack	32
Multipack weight	10kg (theoretical)
Multipack size	620x310x330 cm
Harmonized customs code	9014800000
Country of origin	Designed and made in Lithuania (EU)

LEARN MORE ABOUT THE DEEPER SMART SONAR CHIRP+2